



ewolution of water

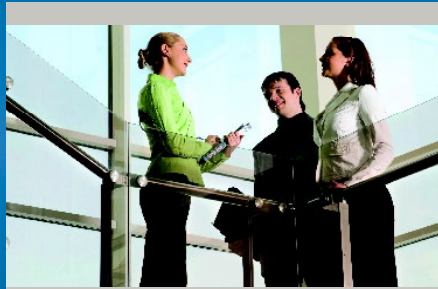
Naturally vitalized water

for your *home*



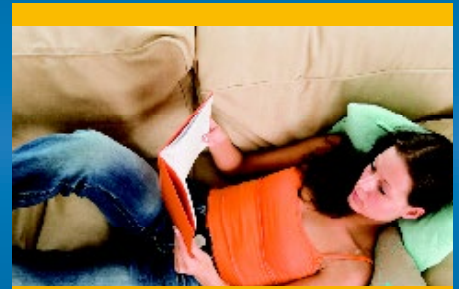
*Water,
fresh and
natural*

for your *company*



*Naturally optimized
water for your
success*

for your *heating*



*simple,
cost effective*

Enjoy the EWO®-benefits at your home:

- » Fresh natural taste
- » reduced tendency for lime scaling
- » Improved taste will cause you to drink more water
- » Improved plant growth
- » Reduced use of chemicals and cleaning agents
- » Environmentally friendly and natural
- » Doesn't require electricity
- » CLASSIC maintenance free
- » Highest quality from Austria
- » Satisfied customers since 1997

The natural water vitalization method from EWO® offers many advantages to you and your clients:

- » Reduction of costs
- » Reduction of technical problems
- » Improved customer experience
- » Reduce resource usage and save the environment
- » Individual EWO® customer service
- » High quality products
- » Many satisfied companies


EWO®'s natural vitalization for heating water provides several advantages:


- » Cost savings compared to conventional methods
- » Counteracts deposits, silting and technical problems
- » Optimized water in your heating system
- » Better indoor climate
- » Natural water optimization
- » Resource-saving and environmentally friendly
- » Many satisfied customers


***Water is not everything -
but everything is nothing without water.***

Naturally optimizing devices & areas of application

| | | DRINKINGWATER | DRINKINGWATER FILTERED | POOL & BIOTOPE | STANDING WATERS | PROCESS-WATER | COOLING-CIRCUITS | HEATING-CIRCUITS |
|---|---|---|---|---|---|---|---|---|
|  | DOLOMIT water vitalization in hard water regions 3/4" to 6" |  | | | |  |  | |
|  | CLASSIC water vitalization 3/8" to 8" |  | | | |  | | |
|  | APARTMENTWATER-OPTIMIZER water vitalization in the apartment 1/2" to 1" |  | | | | | | |
|  | VITAL for all kinds of circuits 3/8" to 8" | | |  | | |  |  |
|  | ACTIV for heating systems 1" to DN125 | | | | | |  |  |
|  | HB-PRO for heating systems, Protection filter & optimization 1" to 2" | | | | | |  |  |
|  | HEATINGWATER-OPTIMIZER for small heating systems and circuits 1/2" to 1" | | | | | |  |  |
|  | WELLWATER-OPTIMIZER versatile use, easy mounting 1 or 2 cylinder | | |  |  |  | | |
|  | GOURMET activated carbon filter with vitalization, various systems | |  | | | | | |
|  | VitalFilter activated carbon filter with vitalization, mobile use | |  | | | | | |

 for your **home**

 for your **company**

 for your **heating**

The basics of the EWO® water optimization

Nature was and is the model for the development of the EWO® water optimization method. The wealth of experience of many water research pioneers (e.g. Viktor Schaubberger) forms an important basis for the construction of EWO® products.

Water is the most important food, it is changing and malleable.

In its structures, the so-called clusters, it can absorb, transmit and release information.

With the EWO® method, normal tap water is first passed over the double helix, swirling it around and preparing it for information absorption.

Then the information water present in the device has an effect on the pouring water.

This information water consists of a high-energy filling of the purest spring water, enriched with a special combination of high quality additives.

Since water molecules are dipoles (like alignable magnets) they are able to take over the natural information again.

A surrounding, light magnetic field also causes a change in the lime structure in the water flowing through it. In this way, normal tap water is transformed into revitalized water with all its wonderful benefits.

EWO® function principles - like in nature:



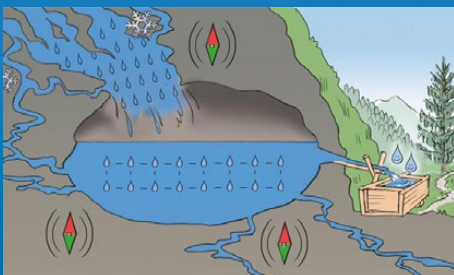
1. Vortex:

Vortex arise in every free flowing water, above and below ground



2. Information-transfer:

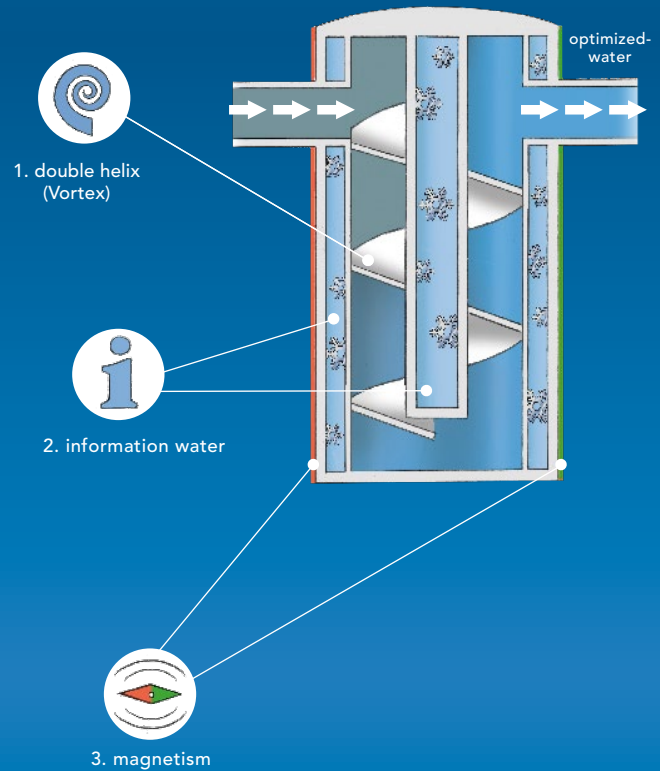
Minerals are in constant contact with water.



3. earth-like magnetic field:

The constant companion of water on its way to us.

EWO® CLASSIC: (Sectional drawing)



Lime conversion through EWO® water optimization:

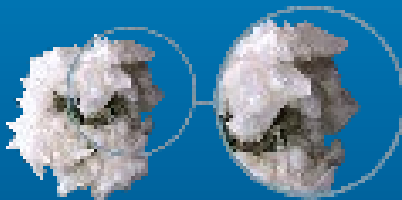
1. Physical lime conversion

With the proven EWO® water optimization, the crystalline structure of the lime changes from a large calcite to a small, round aragonite crystal.

Calcite usually nurtures the formation of hard limestone, whereas aragonite does not deposit in this form or is only very slightly deposited.

This effect is not only evident in daily practice but was scientifically proven through study at the university by Bologna for EWO®.

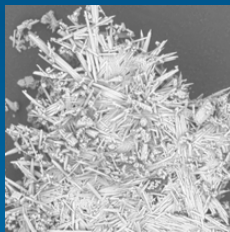
Lime conversion with EWO®:



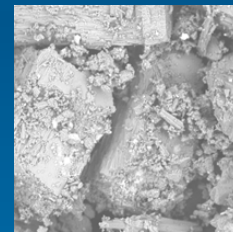
Calcite (before)



Aragonite (after)



Crystal structure edged and sharp



Crystal structure granular and round

2. Enhanced lime conversion with EWO® DOLOMIT

As a further development of the classic, physical lime conversion, we have developed the new EWO® DOLOMIT with magnesium anode for very hard water.

The tendency to calcification is reduced, even with the hardest water, without removing the minerals from the water. (Please stick to area of application recommendations, provided upon request)

We think: "It is the most modern and natural method to take away the scare of very mineral-rich water!"



DOLOMIT

Acts actively against limescale deposits

With EWO® DOLOMIT we have succeeded in combining two proven technologies in one device:

1. **The effective EWO® water optimization with the 3 mechanisms**
2. **The proven technology of the magnesium anode**

The anode extends the function of normal water optimization especially for hard (mineral-rich) water in a completely natural way.

The water hardness is not measurably changed (minerals remain in the water), but the ability of the lime to accumulate is reduced.

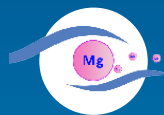
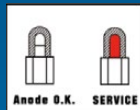
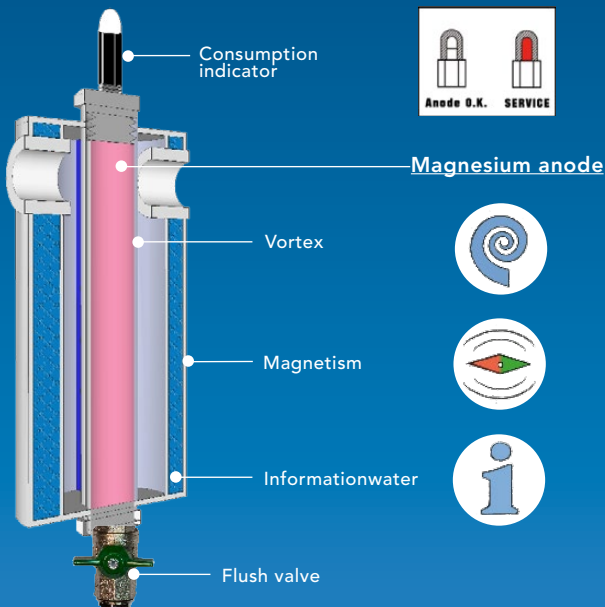
Thanks to the unique combination of these two technologies in EWO® DOLOMIT, limescale deposits are also reduced in extreme application areas.

The advantages of this combination:

- » Reduced and changed formation of deposits on all surfaces (fittings, aerators & tiles) as well as in technical devices such as kettles, coffee machines, washing machines / dishwashers, and much more.
- » The water composition is not changed, important minerals remain in the drinking water
- » Affordable method without chemicals and electricity
- » Consumption indicator for anode



Sectional drawing DOLOMIT:



Installation at the house water inlet with a pre-filter



Flow direction ->>

The magnesium anode has a different service life depending on water consumption and water quality. It is necessary to replace the anode when the color capsule (consumption indicator) turns red, but no later than every 2 years.

The magnesium anode used consists of 99.7% pure magnesium and complies with EN12438 - approved for drinking water.



| EWO® DOLOMIT | | Technical Data | | | | | | | | |
|------------------------------------|------|----------------|-----|------|------|------|------|-------|------------------|------------------|
| Dimension | | 3/4" | 1" | 5/4" | 6/4" | 2" | 2,5" | 2,5"F | 3" | 4" |
| Nominal width | DN | 20 | 25 | 32 | 40 | 50 | 65 | 65 | 80 | 100 |
| Max. water pressure | bar | 15 | | | | | | | | |
| Operating temperature | °C | 1-90 | | | | | | | | |
| Flow rate Δp 0,2 bar | m³/h | 1,8 | 7 | 11 | 16 | 28 | 44 | 44 | 63 | 112 |
| Flow rate Δp 0,5 bar | m³/h | - | 11 | 17,5 | 25 | 45 | 70 | 70 | 100 | 178 |
| Length/Height incl. anode | mm | 280 | 270 | 360 | 400 | 505 | 505 | 505 | 587 | 670 |
| Diameter | mm | 80 | 105 | 130 | 154 | 168 | 168 | 168 | 185 | 250 |
| Clear width without double nipples | mm | 249 | 115 | 146 | 165 | 180 | 180 | 180 | 340 incl. flange | 400 incl. flange |
| Weight | kg | 4,5 | 4 | 7,5 | 12 | 16,5 | 16,5 | 20 | 30 | 45 |

CLASSIC

Vitalization of drinking and industrial water



Provides your whole house with vitalized water. Whether kitchen, bathroom, shower, washing machine or any other device with a water connection.

As the owner of an EWO® CLASSIC, you can always enjoy the best, vitalized water from every tap in the house.

Pamper your skin with vitalized water in the shower or soak up the power of nature in the bathtub and quench your thirst with refreshingly vitalized water.

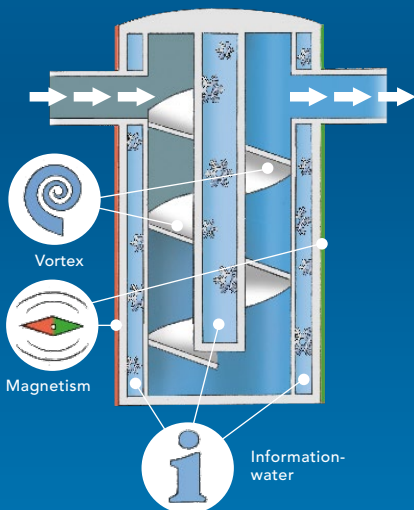
Reduce the use of detergents, chemicals and cleaning agents with the same result and make a contribution to the relief of the groundwater and our environment.

Vitalization of process water and water that is used for production or admixture.

You can also benefit from the many advantages of EWO® water optimization in trade and industry.

Please contact us for detailed information.

Sectional drawing CLASSIC:



The advantages:

- » Drinking water tastes better
- » Better waterquality
- » Reduces mineral deposits
- » Nearly 20 years in practical use



Installation at the house water inlet with a pre-filter



Flow direction ->>



| EWO® CLASSIC | | Technical Data | | | | | | | | | | |
|------------------------------------|------|----------------|------|------|------|------|------|-----|------|------------------|------------------|--------------|
| Dimension | Inch | 3/8" | 1/2" | 3/4" | 1" | 5/4" | 6/4" | 2" | 2,5" | 3" | 4" | 6" |
| Nominal width | DN | 10 | 15 | 20 | 25 | 32 | 40 | 50 | 65 | 80 | 100 | 150 |
| Max. water pressure | bar | 15 | | | | | | | | | | |
| Operating temperature | °C | 1-90 | | | | | | | | | | |
| Flow rate Δp 0,2 bar | m³/h | 1,1 | 1,9 | 4,2 | 7,5 | 12 | 17 | 30 | 47 | 68 | 120 | 270 |
| Flow rate Δp 0,5 bar | m³/h | 1,7 | 3,1 | 6,9 | 12,5 | 19 | 28 | 49 | 77 | 110 | 196 | 441 |
| Length/Height | mm | 130 | 155 | 180 | 210 | 300 | 340 | 445 | 445 | 540 | 590 | 650 |
| Diameter | mm | 47 | 60 | 85 | 105 | 130 | 154 | 168 | 168 | 200 | 250 | 355 |
| Clear width without double nipples | mm | 70 | 80 | 98 | 115 | 146 | 165 | 180 | 180 | 340 incl. flange | 400 incl. flange | upon request |

VITAL

Optimization of circuits

The EWO® VITAL series is the ideal extension to our proven EWO® CLASSIC device series - especially for water circuits.

EWO® VITAL for heating

- » Protection of the system*
- » Optimized heating water
- » Totally natural
- » Compliance with the standard water values*
- » Maintenance free

The EWO® method works against corrosion and silting up in the system in a very natural way. Clear water means good heat transfer and therefore less heating costs. Save with EWO®.



Clear heating water in just a few weeks.

* Prerequisite: ÖNORM-compliant filled and serviced heating system



EWO® VITAL for process water, heating- and cooling circuits

More and more well-known companies are choosing EWO® water optimization. Think ahead and use the advantages of optimized EWO® water.

Reduce the operating costs, which is entirely in the interests of nature as well as resource and environmentally friendly!

EWO®, a decision that quickly pays for itself:

- » Fewer failures & reduced maintenance effort
- » Recue chemicals
- » Prevent algae growth



| EWO® VITAL | | Technical Data | | | | | | | |
|--------------------------------|------|----------------|-----|------|------|---------------------|---------------------|---------------------|---------------------|
| Dimension | Inch | 1/2" | 1" | 5/4" | 2" | 2,5" | 3" | 4" | 6" |
| Nominal width | DN | 15 | 25 | 32 | 50 | 65 | 80 | 100 | 150 |
| Max. water pressure | bar | 10 | | | | | | | |
| Operating temperature | °C | 1-90 | | | | | | | |
| Flow rate Δp 0,1 bar | m³/h | 1,2 | 4,8 | 7,5 | 19 | 30 | 43 | 77 | 172 |
| Flow rate Δp 0,2 bar | m³/h | 1,8 | 7,1 | 11 | 28 | 44 | 64 | 114 | 256 |
| Total Length | mm | 100 | 160 | 200 | 235 | 324 incl. flange | 330 incl. flange | 370 incl. flange | 550 incl. flange |
| Diameter | mm | 56 | 80 | 115 | 133 | 185 | 200 | 220 | 285 |
| Weight | kg | 0,5 | 1,4 | 2,7 | 4,8 | 12,5 | 16,3 | 20,8 | 43 |
| Boiler output | kW | <50 | >50 | >100 | <500 | >500 | >500 | <1000 | >1000 |
| Heating system volume, approx. | m³ | 2 | 3 | 4 | 5 | 8 | 10 | 20 | 40 |
| Calming section | cm | 10 | 20 | 25 | 30 | 30 | 35 | 40 | 50 |

ACTIV

Water optimization for heating systems

EWO® ACTIV - with a lasting effect for natural water optimization in heating and cooling systems.

The magnesium anode (s) as the less noble material dissolves over time. In our modern EWO® ACTIV technology, magnesium hydroxide is brought into solution through the included magnesium anode technology in order to alkalize the heating- / cooling water and increase the pH, the oxygen is reduced and an active corrosion protection is made.

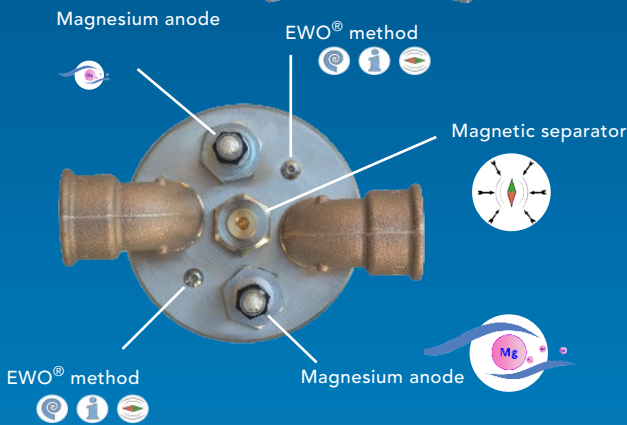
In addition, a magnetic rod is integrated, which removes magnetically reacting parts from the heating water.

The advantages:

- » Environmentally friendly and measurable method
- » Chemical-free and sustainable technology
- » Proven technology for years
- » Protects against corrosion and sludge
- » Optimal energy efficiency and savings of energy costs
- » Purely mechanical, without external energy
- » Made of acid-proof stainless steel (V4A)
- » Made in Austria in manufactory quality

Areas of application:

- » New heating systems
- » In the renovation of old systems
- » In cooling circuits



Durability anode:

Depending on water quality and operating conditions, the service life is approx. 2 years. It is only necessary to replace the anode when the color capsule turns red.

Functionality:

- » Magnesium anode technology
- » Magnetic rod
- » Sludge separation
- » EWO® method

| EWO® ACTIV | | Technische Daten | | | | | | | | | | |
|-------------------------|------|------------------|---------|---------|------|------|------|--------|-------------|-------------|--------------|--------------|
| Dimension | Inch | 1" Mini | 1" Midi | 1" Maxi | 5/4" | 6/4" | 2" | 2 1/2" | DN65 flange | DN80 flange | DN100 flange | DN125 flange |
| Nominal width | DN | 25 | 25 | 25 | 32 | 40 | 50 | 65 | 65 | 80 | 100 | 125 |
| Max. Operating pressure | bar | 10 | | | | | | | | | | |
| Operating temperature | °C | 1-90 | | | | | | | | | | |
| Flow rate Δp 0,1 bar | m³/h | 3,8 | 4,6 | 4,6 | 7,2 | 10,3 | 18,4 | 28,7 | 28,7 | 41,4 | 73,6 | 103,4 |
| Flow rate Δp 0,2 bar | m³/h | 5,5 | 6,6 | 6,6 | 10,3 | 14,8 | 26,4 | 41,2 | 41,2 | 59,3 | 105,4 | 143,8 |
| Total height | mm | 240 | 390 | 390 | 510 | 580 | 670 | 700 | 750 | 940 | 940 | 1.102 |
| Diameter/Depth | mm | 80 | 120 | 120 | 140 | 195 | 195 | 250 | 250 | 465 | 465 | 556 |
| Weight | kg | 4 | 6 | 6 | 9 | 14 | 18 | 19 | 22 | 65 | 75 | 95 |
| Anodes | pcs. | 1 | 1 | 2 | 2 | 2 | 2 | 2 | 2 | 2 | 2 | 3 |

HEATINGWATER- OPTIMIZER

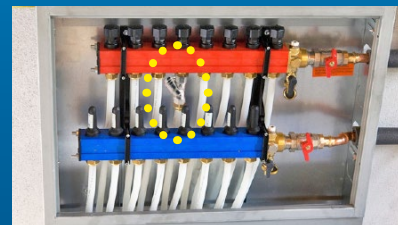


Optimization for small heating systems

Unnatural conditions in the heating circuit result in black, muddy heating water, which often leads to technical problems.

You can prevent technical problems by installing an inexpensive EWO® heating water optimizer HWO.

A coating that is only 1mm thick in heating pipes, heat exchangers or radiators can increase energy consumption by up to 10%. Furthermore, maintenance work caused by silting is associated with great effort and expense.



Installation in the heating circuit distributor

| EWO® HWO | | Technical Data | | |
|------------------------------|------|----------------|------|-----|
| Dimension | Inch | 1/2" | 3/4" | 1" |
| Nominal width | DN | 15 | 20 | 25 |
| Max. water pressure | bar | 4 | | |
| Operating temperature | °C | 1-70 | | |
| Flow rate Δp 0,1 bar | m³/h | 1 | 2,2 | 3,8 |
| Flow rate Δp 0,2 bar | m³/h | 1,4 | 3,1 | 5,5 |
| Total length | mm | 58 | 70 | 88 |
| Diameter | mm | 25 | 30 | 39 |
| Weight | kg | 0,2 | 0,4 | 0,5 |
| Boiler output | kW | 15 | 20 | 25 |
| Heating system volume approx | m³ | 0,2 | 0,3 | 0,5 |
| Calming section | cm | 10 | 15 | 20 |

HB-PRO



Heating protection filter with optimization module

The installation of a heating water protection filter is nowadays recommended by many boiler manufacturers and helps to protect the entire heating system.

The installation of a protective filter is particularly important in old systems, of which their pipe systems are often silted up or heavily encrusted.

However, since the filtering of the heating water alone does not provide lasting protection for the system, the HB-PRO also uses the proven EWO® optimization.

Your key advantages:

- » Protection of the entire system and components from floating parts and assembly residues
- » The system continues to circulate (hydraulic balancing)
- » The heating water remains clear and clean (heat transfer)
- » The boiler is protected in the long term
- » Improved room climate through optimized heating water

Area of application:

- » Renovation of heating system
- » New heating system (boiler protection)
- » Cooling circuits

| EWO® HB-PRO | | Technical Data | | | |
|------------------------------|------|----------------|------|------|------|
| Dimension | Inch | 1" | 5/4" | 6/4" | 2" |
| Nominal width | DN | 25 | 32 | 40 | 50 |
| Max. water pressure | bar | 10 | | | |
| Operating temperature | °C | 1-90 | | | |
| Flow rate Δp 0,1 bar | m³/h | 4 | 6,5 | 9,5 | 18 |
| Flow rate Δp 0,2 bar | m³/h | 6,5 | 10,5 | 15 | 26 |
| Total height | mm | 324 | 324 | 338 | 351 |
| Total width | mm | 130 | 135 | 150 | 160 |
| Weight | kg | 5 | 5 | 5,5 | 6,1 |
| Boiler output | kW | >50 | >100 | <500 | <500 |
| Heating system volume approx | m³ | 2 | 3 | <5 | >5 |



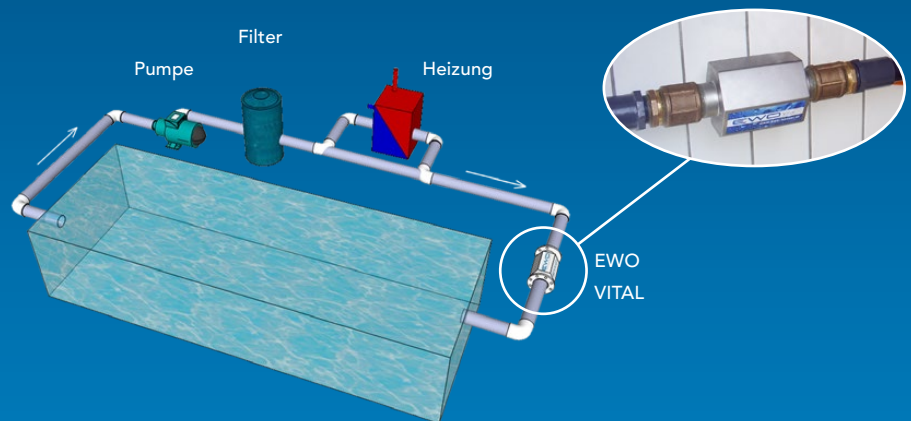
VITAL for pools, biotopes

The VITAL is designed especially for water circuits.

Whether swimming pool, biotope or whirlpool, you will be amazed by the positive changes.

An optimized water quality and the possibility to save chlorine, chemicals and cleaning agents is the most modern way to enjoy water.

- » Pleasant bathing experience
- » Chemical/chlorine reduction is possible
- » Clear bathwater
- » Easier cleaning



Just natural!



| EWO® VITAL - CIRCUIT | | Technical Data | | | | | | | | | |
|-----------------------|------|----------------|------|-----|------|-----|---------------------|---------------------|---------------------|---------------------|--|
| Dimension | Inch | 3/8" | 1/2" | 1" | 5/4" | 2" | 2,5"F | 3" | 4" | 6" | |
| Nominal width | DN | 10 | 15 | 25 | 32 | 50 | 65 | 80 | 100 | 150 | |
| Max. water pressure | bar | 10 | | | | | | | | | |
| Operating temperature | °C | 1-90 | | | | | | | | | |
| Flow rate Δp 0,1 bar | m³/h | 0,7 | 1,2 | 4,8 | 7,5 | 19 | 30 | 43 | 77 | 172 | |
| Flow rate Δp 0,2 bar | m³/h | 1 | 1,8 | 7,1 | 11 | 28 | 44 | 64 | 114 | 256 | |
| Total length | mm | 80 | 100 | 160 | 200 | 235 | 324 incl. flange | 330 incl. flange | 370 incl. flange | 550 incl. flange | |
| Diameter | mm | 35 | 56 | 80 | 115 | 133 | 185 | 200 | 220 | 285 | |
| Weight | kg | 0,2 | 0,5 | 1,4 | 2,7 | 4,8 | 12,5 | 16,3 | 20,8 | 43 | |
| Calming section | cm | 10 | 10 | 20 | 25 | 30 | 30 | 35 | 40 | 50 | |

APARTMENT- WATER OPTIMIZER



Water vitalization for rental and condominiums

If there is a central cold water stopcock in your apartment, you too can soon enjoy the benefits of vitalized water.

The upper part of the cold water shut-off valve is unscrewed and the EWO® Apartmentwater-Optimizer is installed instead. The shut-off function is retained.

When moving, the EWO® Apartment-Water-Optimizer can easily be dismantled and taken with you.



The dimension of the connection determines the model 1/2", 3/4" or 1"

WELLWATER- OPTIMIZER



Optimization for stagnant and slowly flowing waters

The EWO® Wellwater-Optimizer is easy to install without any structural changes. Suitable for water optimization in wells, biotopes, ponds, rainwater tanks or slurry pits.

It contributes to improving the quality of the water by supporting the natural self-cleaning power. This favors a gradual restoration of the microbiological balance.

Areas of application:



- » Ponds & biotopes
- » Wells (min. 50cm diameter)
- » Pools (in the expansion tank)
- » Springwater-reservoir
- » Circulation tank
- » Slurry pits

GOURMET

Only the best for gourmets

Drink more water!

Drinking a lot makes you fit and productive. Filter your water with high-quality activated carbon and revitalize it with the renowned EWO® technology for good and tasty drinking water from your tap.

EWO® GOURMET is our high-quality filter system in 3 different versions, suitable for every installation situation. It offers all the advantages of optimization and filtering as a single-user solution, e.g. in the kitchen by the drinking water tap.



Your key advantages:

- » EWO® vitalization
- » Newest filter technology
- » Minerals remain in the water
- » Taste neutralization
- » Easy handling
- » Easy mounting

Choose your GOURMET-System:

ELEGANCE PREMIUM Set

incl. 3-way faucet
(various designs)



Nr. 64
ELEGANCE

The ELEGANCE faucet is installed **instead the previous faucet**. Own outlet for filtered water. Flow rate: 2 l/min. Capacity: 10.000 liters or 6 months

SINGLE PREMIUM Set

incl. single faucet
(various designs)



Nr. 315
SINGLE

The SINGLE faucet is installed **additionally to the existing faucet**. Flow rate: 2 l/min. Capacity: 10.000 liters or 6 months

additional PREMIUM Set faucets:



Nr. 271
ELEGANCE

Nr. 235
SINGLE

Nr. 88
ELEGANCE

BASIC PURO Set

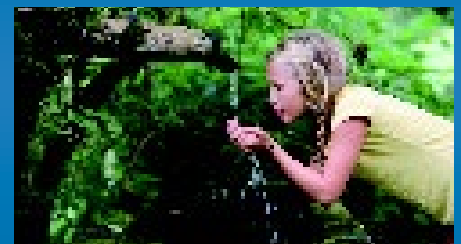
for existing faucet
(cartridge with higher flow rate)



To be used on existing faucet, all cold water is filtered & revitalized. Flow rate: 9 l/min. Capacity: 5.000 liters or 6 months

Each set includes:

- » EWO® VITAL 3/8" optimization module
- » Activated carbon filter with housing
- » Installation material for immediate installation



| The filter removes many pollutants like ... | |
|---|-------------------------------|
| ... Chlorine | ... Drug residues |
| ... Hormones | ... Residues of pesticides |
| ... Heavy metals | ... Bacteria, micro organisms |

VITALFILTER

Good Water for everyone



While you are getting vitalized water in the whole house with our products, the EWO® VitalFilter is a simple and flexible solution for filtering and vitalizing drinking water on a single tap. It is an affordable entry into the world of water optimization.

It is an ideal filter for travelling and mobile use.

Whether in the detached house, when camping or in the hotel. You always get refreshing and high quality drinking water

Installation is quick and easy right on the tap.

| The filter removes many pollutants like... | |
|--|-------------------------------|
| ... Chlorine | ... Drug residues |
| ... Hormones | ... Residues of pesticides |
| ... Heavy metals | ... Bacteria, micro organisms |

ENERGIESTAB

Vitalization - take it everywhere

Activate every drink-
wherever you are!



REFERENCES

An excerpt of satisfied EWO® customers:



„Since the drinking water in our area has a high degree of hardness, the protection of the entire installation and the devices was one more reason for us to incorporate this *advanced, environmentally friendly system* into our new operating building.

We have installed *EWO devices in the main drinking water line*, in the heating system, in the own water supply, in the cooling circuit and in the supply line to the groundwater heat pumps.

After *6 years of experience with EWO* one can say, that this system has proven itself and we are completely satisfied with it.“

Organic farm Achleitner / Eferding - Austria

PÖTTINGER



As a traditional globally present family enterprise and production facilities in various European countries, one is conscious about the responsibility for environment and future generations.

In 2011 the first *EWO CLASSIC* was installed in the water supply to the factory canteen and cafeteria. Due to the success and the employees' enthusiasm about the improved water quality, EWO devices were finally installed in the main line and the water heating system.

PÖTTINGER / Upper Austria

scheschy

FORUM GESUNDES WOHNEN



„After we've been satisfyingly using water vitalization *for years in the existing company buildings* it was clear to us to use this advanced technology in our newly constructed company building *drinking water and in the heating system.*“

Woodwork Scheschy / Upper Austria

Unil

UNIL | Université de Lausanne



„Because we were convinced of the comprehensive and rapid effect of the *EWO devices in the heating system*, we decided to install a *drinking water vitalization.*“

After a few weeks of operation, an inspection was carried out at the water storage-tank.

Usually the rust-brown mud settled to the bottom has to be drained every few weeks, but this time *only clear water* came to light, which really surprised us.“

University Lausanne / Switzerland

FLORA



"Naturalness and sustainability are very important to us. That is why we only use organic raw materials for the production of our high quality health products. Since the products meet our standards for high-quality manufacturing processes, we have selected EWO for water vitalization and for handling hard water.

We are extremely satisfied with the effectiveness of the EWO devices and therefore recommend EWO at any time!"

Flora / Canada, USA

EWO® water optimization at a glance

Through the combination of vortex, magnetism and information transfer, the water regains its natural abilities. The type of information transfer cannot yet be precisely measured with today's methods, but the multitude of positive effects have been documented for many years and have been confirmed again and again by satisfied users.

Check for yourself whether with EWO® ...

Optimization of
drinking and raw water



- ... drinking water becomes a refreshing pleasure again
- ... the water feels more comfortable when bathing and showering
- ... more freshness and taste of food is created
- ... limescale is easier to remove
- ... you save on detergents and cleaning agents
- ... plant growth improves
- ... your animals will be drawn to vitalized water and will drink more

Optimization of
heating water



- ... the heating water is treated
- ... silting decreases
- ... heat transfer and indoor climate are improved
- ... technical problems in your heating systems are improved

Optimization of
pools, swimming ponds



- ... the water feels softer and the bathing is more pleasant
- ... less chlorine is necessary
- ... chlorine smell and chlorine taste are reduced
- ... you save cleaning agents and cleaning effort

Optimization of ponds
and biotopes



- ... the water quality improves
- ... microbiological balance is restored

Optimization of
process water,
heating-/cooling
circuits



- ... self-cleaning power of heating-, cooling- and process water is increased
- ... the amount of chemicals is reduced
- ... the formation of odors is reduced
- ... service life is extended and operational liability is increased
- ... operational costs decrease – EWO® devices are maintenance free*
- ... resources are saved and you thus protect the environment
- ... *except ACTIV and DOLOMIT

Your contact: